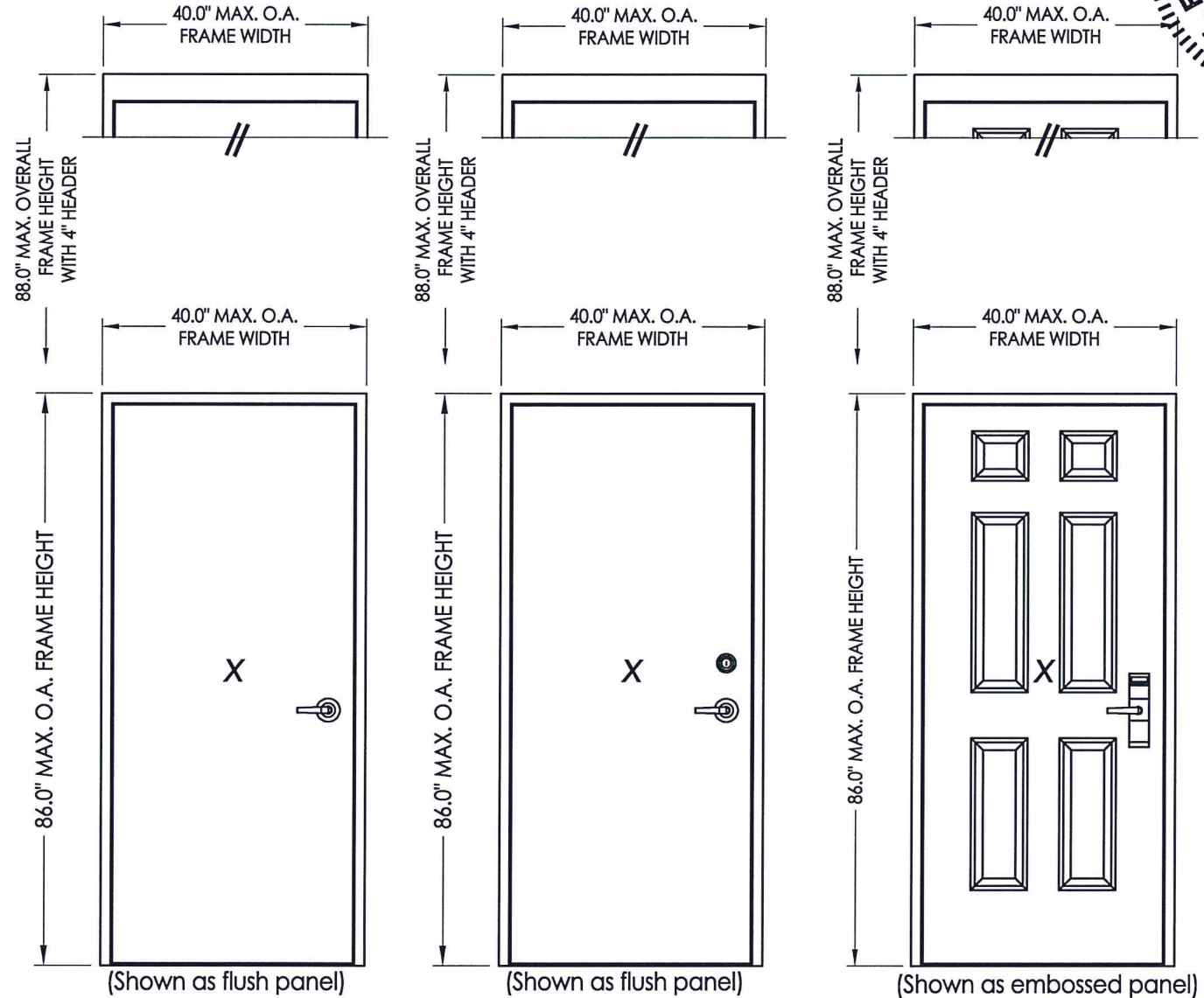


"D" SERIES COMMERCIAL STEEL DOOR IN SWING "IMPACT"

GENERAL NOTES

1. This product has been evaluated and is in compliance with the 7th Edition (2020) Florida Building Code (FBC) structural requirements including the "High Velocity Hurricane Zone" (HVHZ).
2. Product anchors shall be as listed and spaced as shown on details. Anchor embedment to base material shall be beyond wall dressing or stucco.
3. When used in the "HVHZ", this product complies with Section 1626 of the Florida Building Code and does not require an impact resistant covering.
4. Site conditions that deviate from the details of this drawing require further engineering analysis by a licensed engineer or registered architect.
5. Inswing configurations do not meet the water infiltration requirements for the "HVHZ". Inswing units shall be installed only in non-habitable areas or at habitable locations protected by an overhang or canopy such that the angle between the edge of canopy or overhang to sill is less than 45 degrees.
6. All steel shall be protected as specified in Section 2222.6 of the FBC.



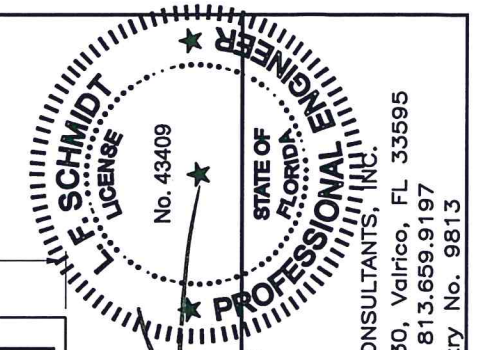
"D" DOOR
(w/ 161 latch)

"D" DOOR
(w/ 161 latch and deadbolt)

"D" DOOR
(w/ mortise lock)

TABLE OF CONTENTS	
SHEET #	DESCRIPTION
1	Typical elevations, design pressures, & general notes
2	Door panel sections 161 lock prep
3	Door panel sections 86E mortise lock prep
4	Horizontal cross sections
5	Horizontal cross sections
6	Horizontal cross sections
7	Vertical cross sections
8	Frame anchoring
9	Anchoring details
10	Components
11	Bill of materials & components

OVERALL FRAME DIMENSION	LOCK TYPE	DESIGN PRESSURE (PSF)	
		POSITIVE	NEGATIVE
40.0" x 86.0"	161 LATCH (SCHLAGE)	+55.0	-55.0
40.0" x 86.0"	161 LATCH & DEADBOLT (DESIGN HARDWARE)	+70.0	-75.0
40.0" x 86.0"	86E MORTISE LOCK (ONITY)	+60.0	-75.0



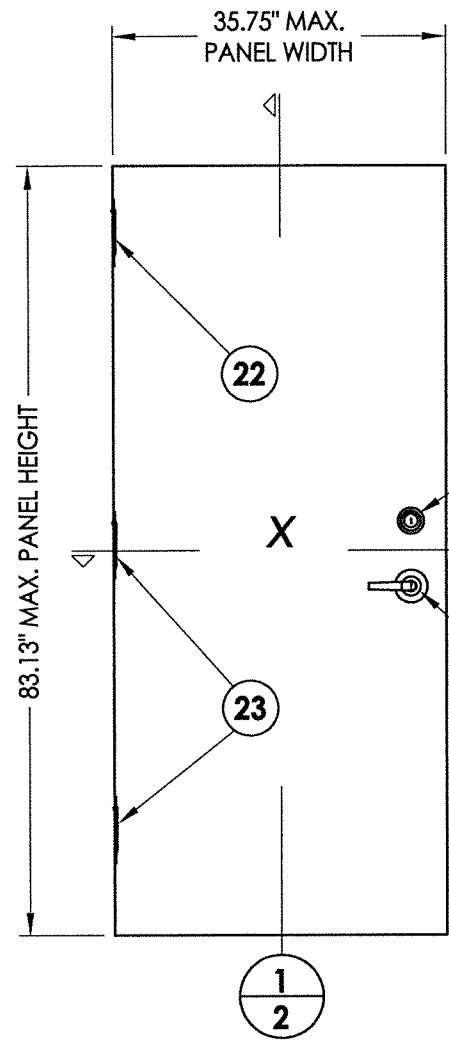
November 15, 2022
 Documents Prepared By:
 Lyndon F. Schmidt
 P.E. No. 43409

PRODUCT: PREMIER PRODUCTS, INC. "D" STEEL DOOR
 PART OR ASSEMBLY: TYPICAL ELEVATIONS, DESIGN PRESSURES & GENERAL NOTES

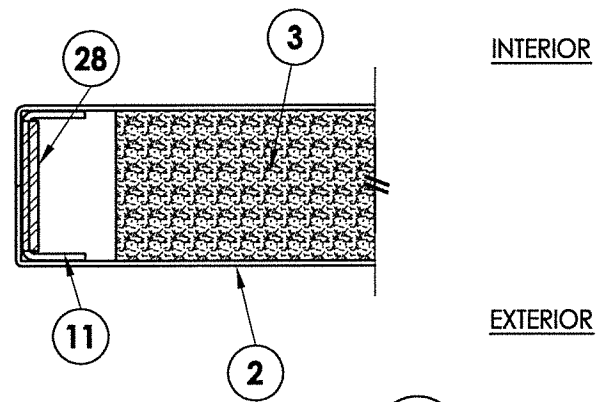
NO.	DATE	BY	REVISIONS

DATE: 11/10/22
 SCALE: N.T.S.
 DWG. BY: LFS
 CHK. BY: RW
 DRAWING NO.: FL-41788.16
 SHEET 1 OF 11

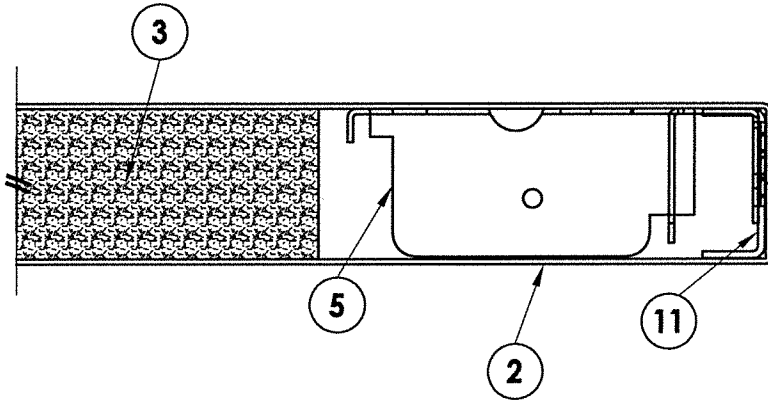
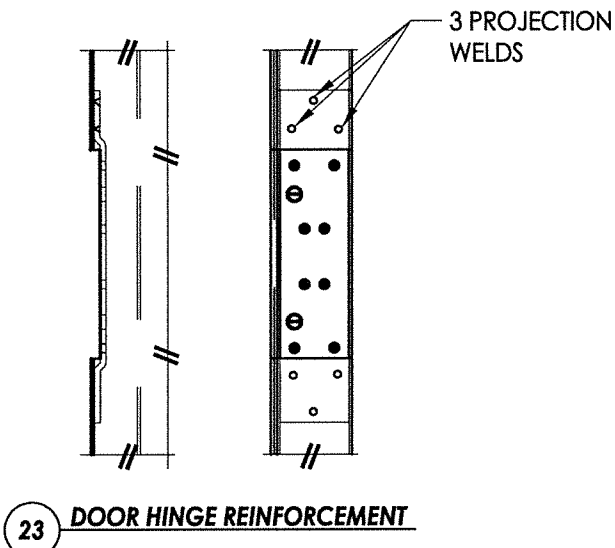
RW BUILDING CONSULTANTS, INC.
 P.O. Box 230, Valrico, FL 33595
 Phone No.: 813.659.9197
 FBPE Registry No. 9813



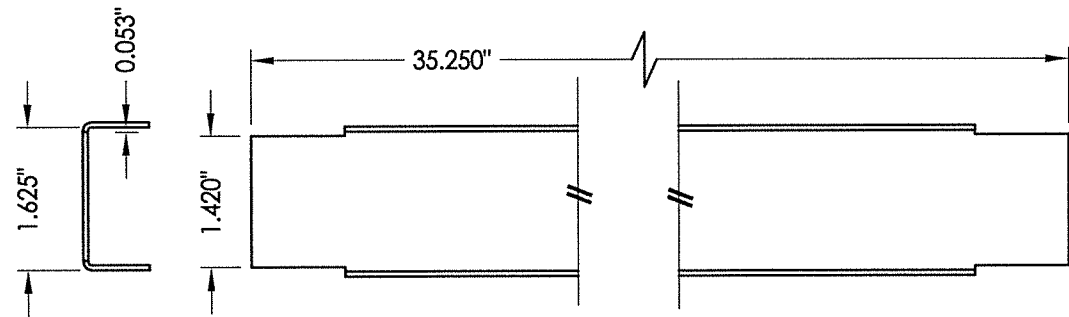
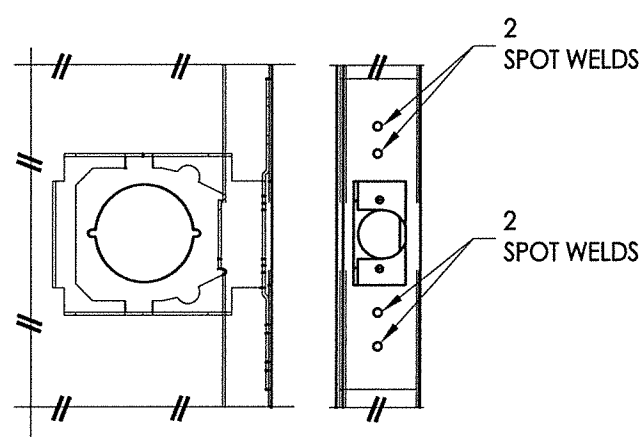
1 "D" OPAQUE STEEL DOOR PANEL



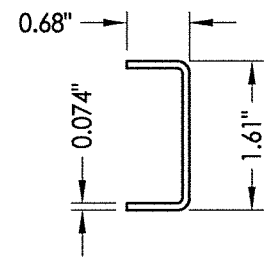
2 HORIZONTAL CROSS SECTION
2 Door panel



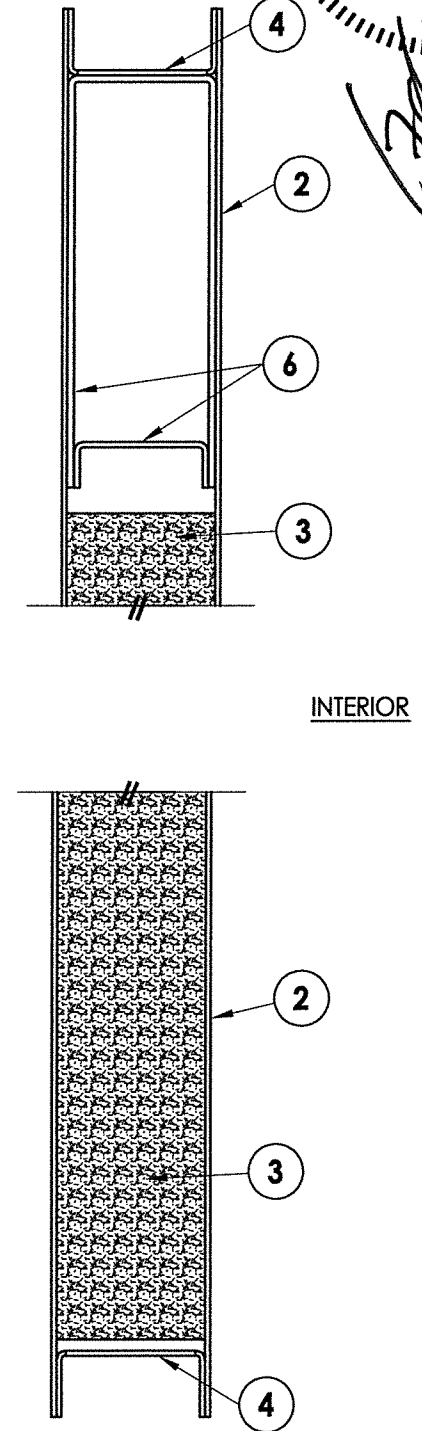
5 LOCK BOX REINFORCEMENT



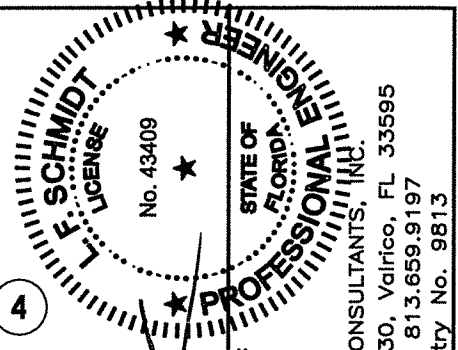
4 DOOR TOP & BOTTOM CLOSER



11 DOOR STILE EDGE Reinforcement



1 VERTICAL CROSS SECTION
2 Door panel

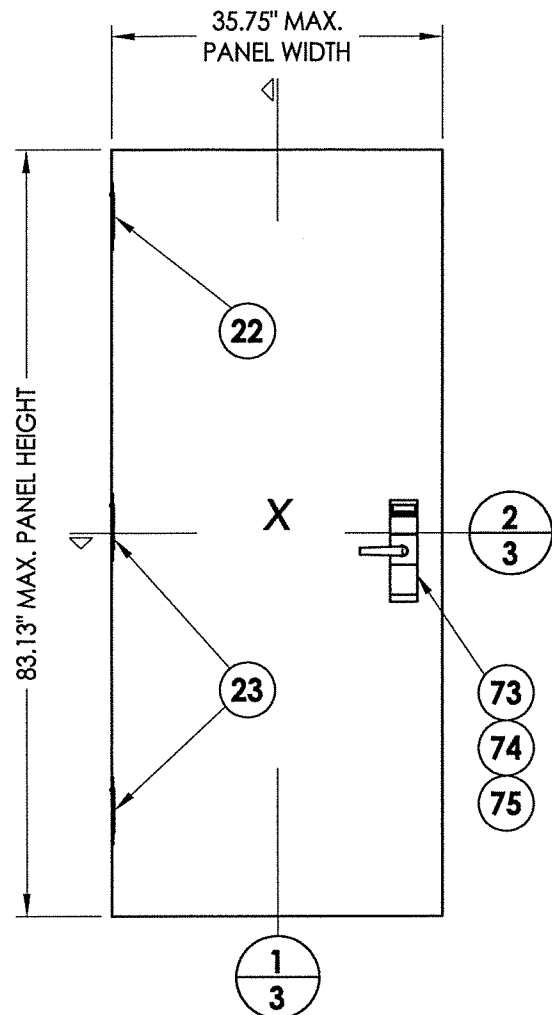


November 15, 2022
Documents Prepared By:
Lyndon F. Schmidt
P.E. No. 43409
R.W. BUILDING CONSULTANTS, INC.
P.O. Box 230, Valrico, FL 33595
Phone No.: 813.659.9197
FBPE Registry No. 9813

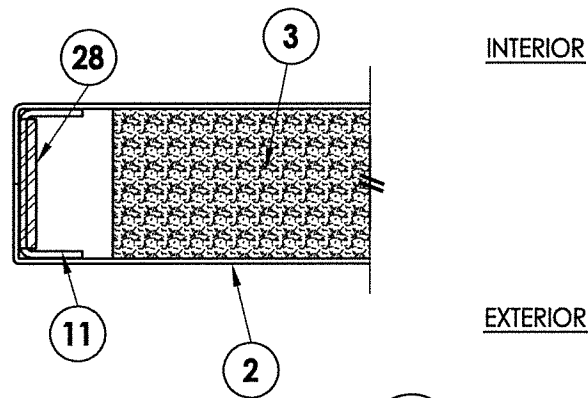
PRODUCT:
PREMIER PRODUCTS, INC.
"D" STEEL DOOR
PART OR ASSEMBLY:
DOOR PANEL SECTIONS
161 LOCK PREP

NO.	DATE	BY	REVISIONS

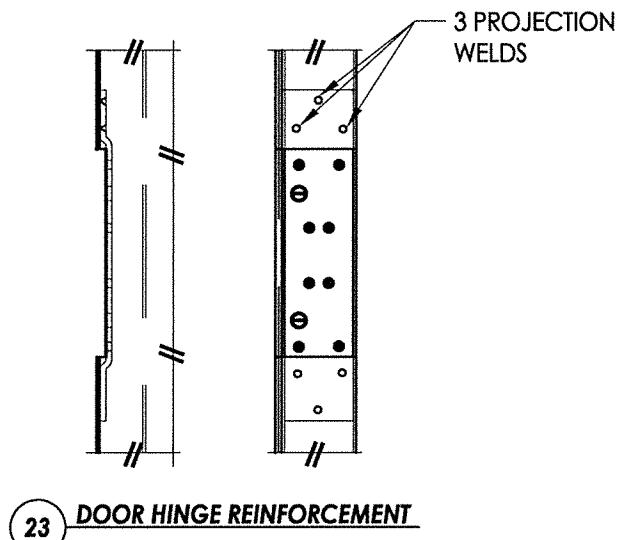
DATE: 11/10/22
SCALE: N.T.S.
DWG. BY: LFS
CHK. BY: RW
DRAWING NO.: FL-41788.16
SHEET 2 OF 11



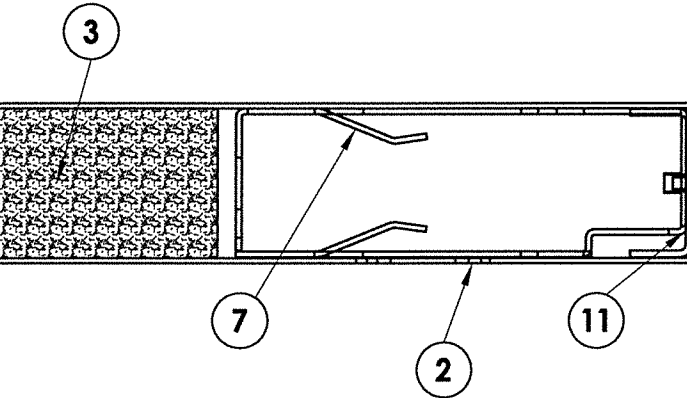
1 "D" OPAQUE STEEL DOOR PANEL



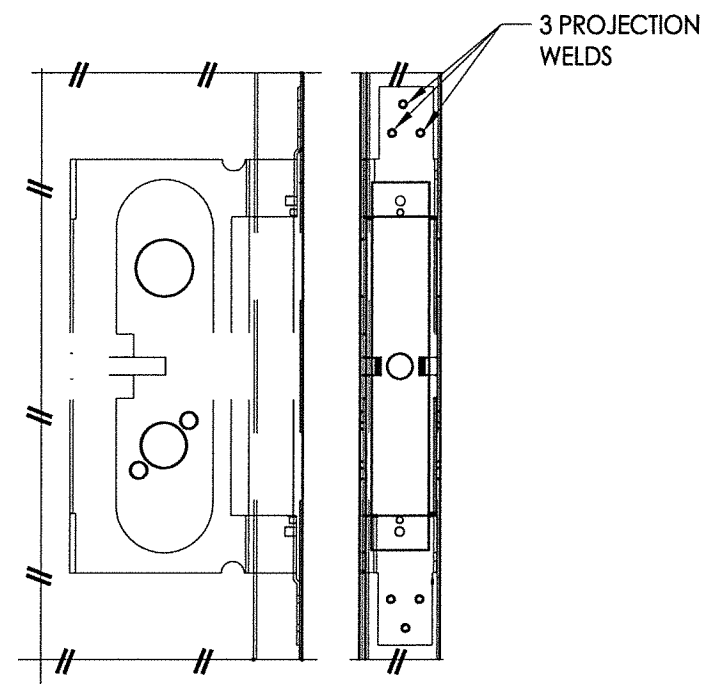
2 HORIZONTAL CROSS SECTION
3 Door panel



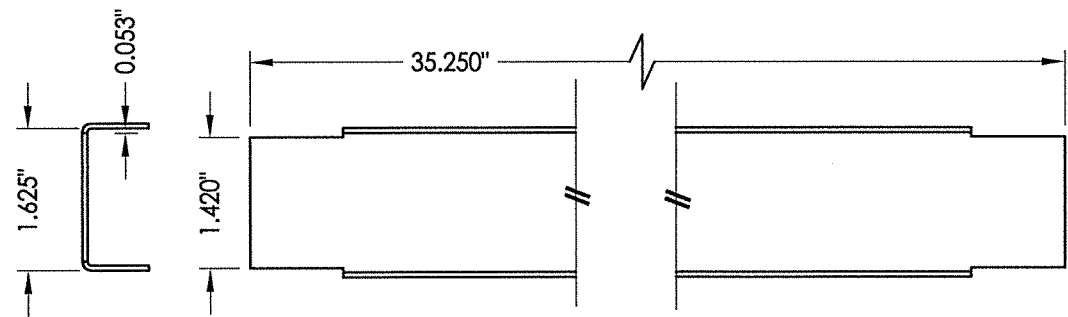
23 DOOR HINGE REINFORCEMENT



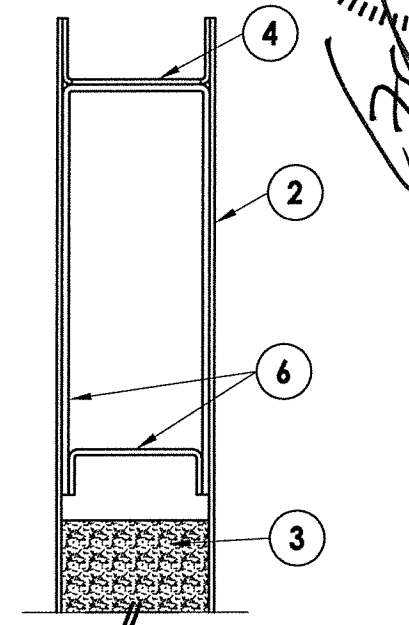
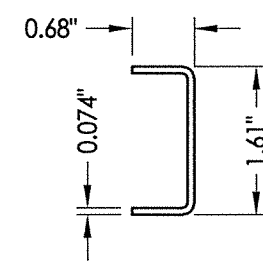
7 MORTISE BOX REINFORCEMENT



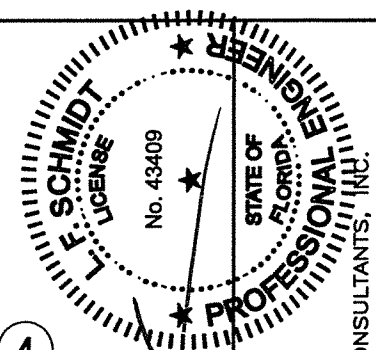
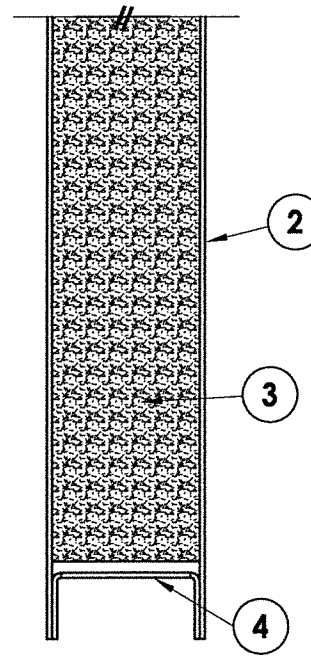
11 DOOR STILE EDGE Reinforcement



4 DOOR TOP & BOTTOM CLOSER



1 VERTICAL CROSS SECTION
3 Door panel



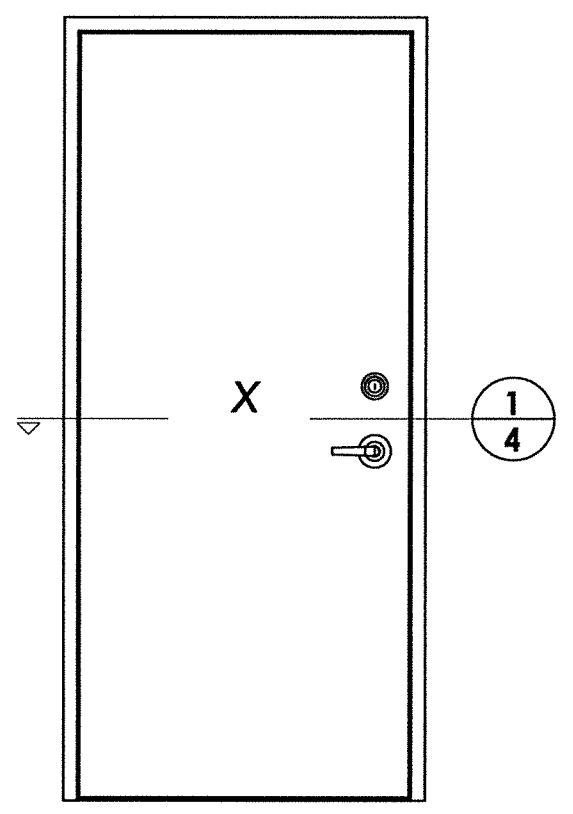
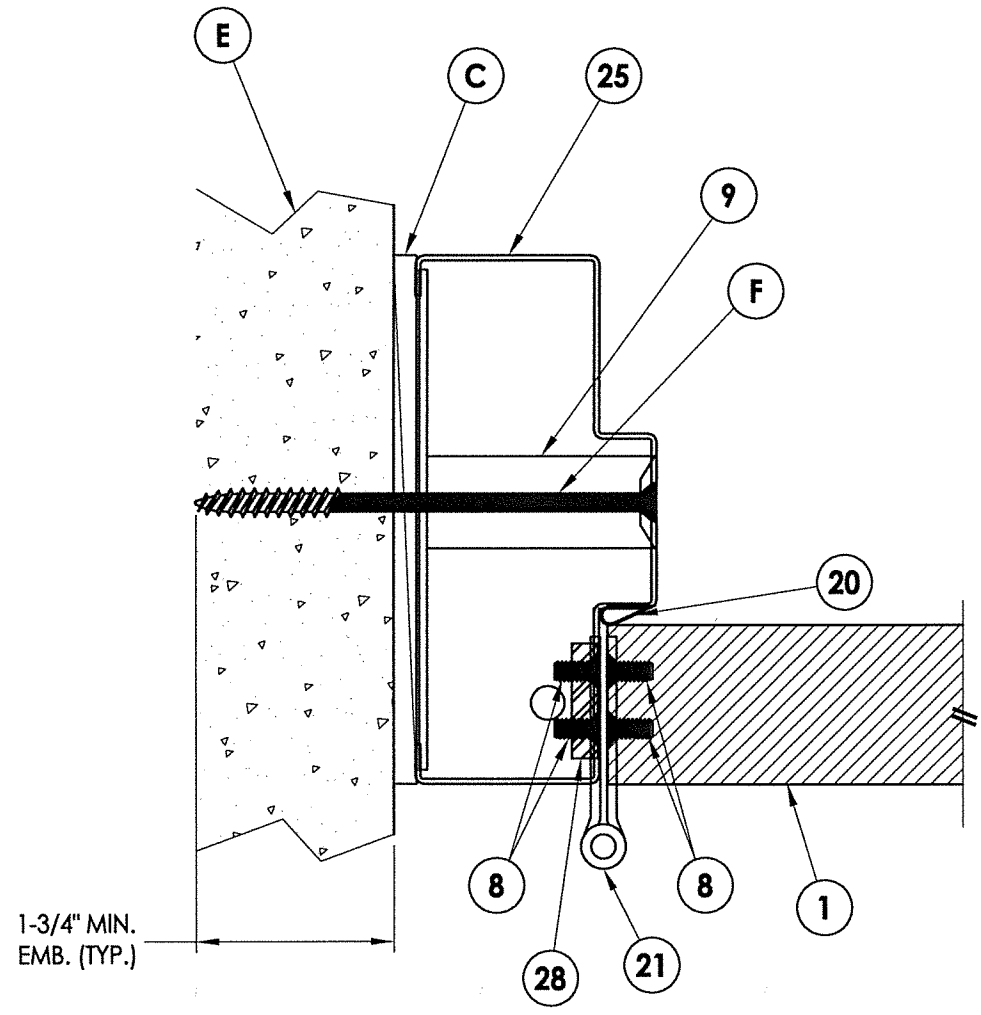
November 15, 2022
Documents Prepared By:
Lyndon F. Schmidt
P.E. No. 43409

RW BUILDING CONSULTANTS, INC.
P.O. Box 230, Vairico, FL 33595
Phone No.: 813.659.9197
FBPE Registry No. 9813

PRODUCT: PREMIER PRODUCTS, INC. "D" STEEL DOOR
PART OR ASSEMBLY: DOOR PANEL SECTIONS 86E MORTISE LOCK PREP

NO.	DATE	BY	REVISIONS

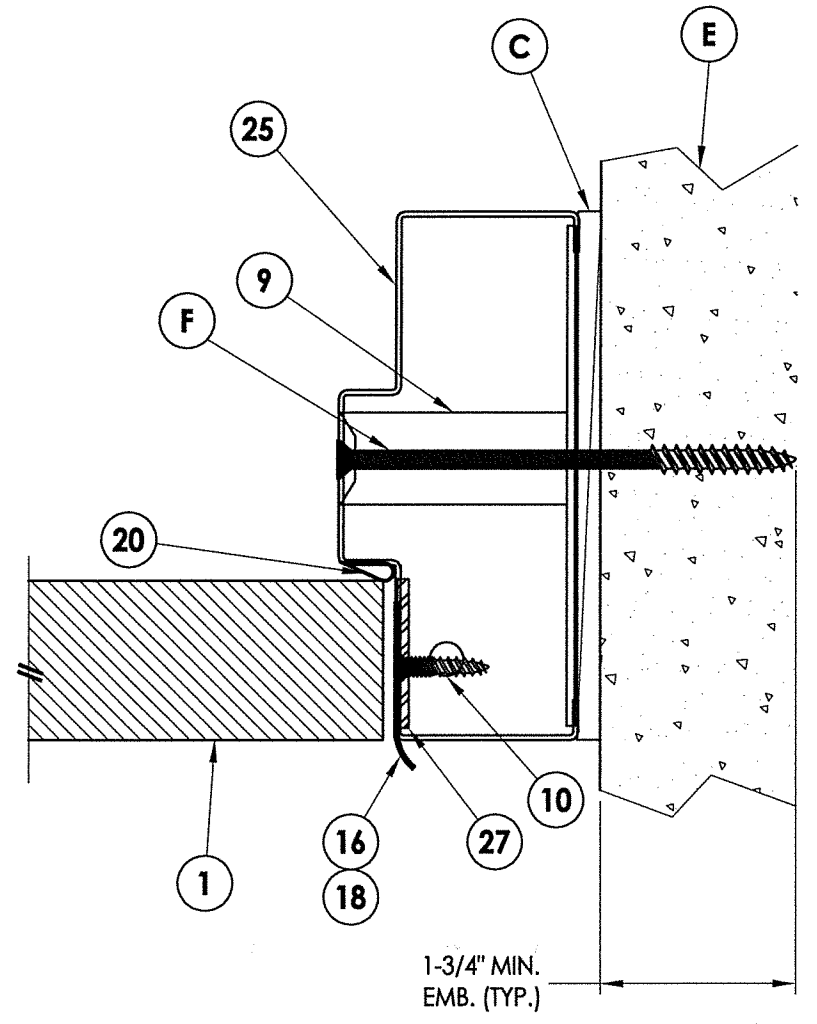
DATE: 11/10/22
SCALE: N.T.S.
DWG. BY: LFS
CHK. BY: RW
DRAWING NO.: FL-41788.16
SHEET 3 OF 11



EXTERIOR

INTERIOR

1/4 HORIZONTAL CROSS SECTION



L. F. SCHMIDT
LICENSE
No. 43409

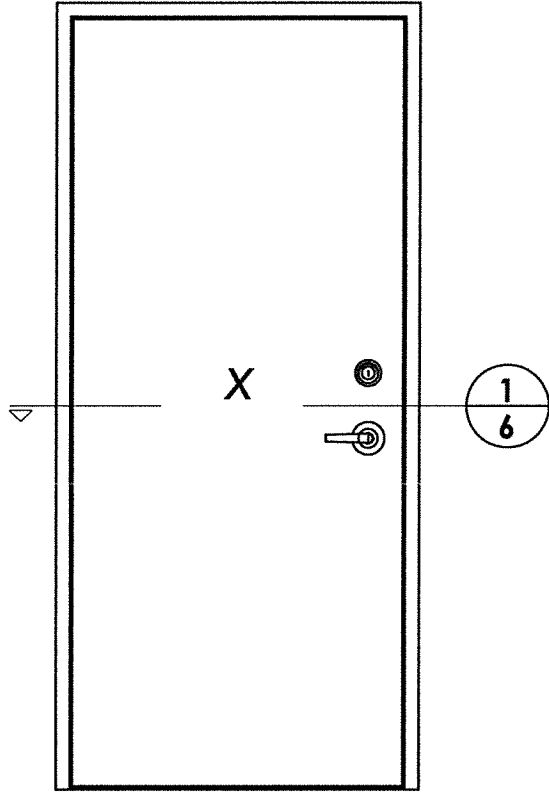
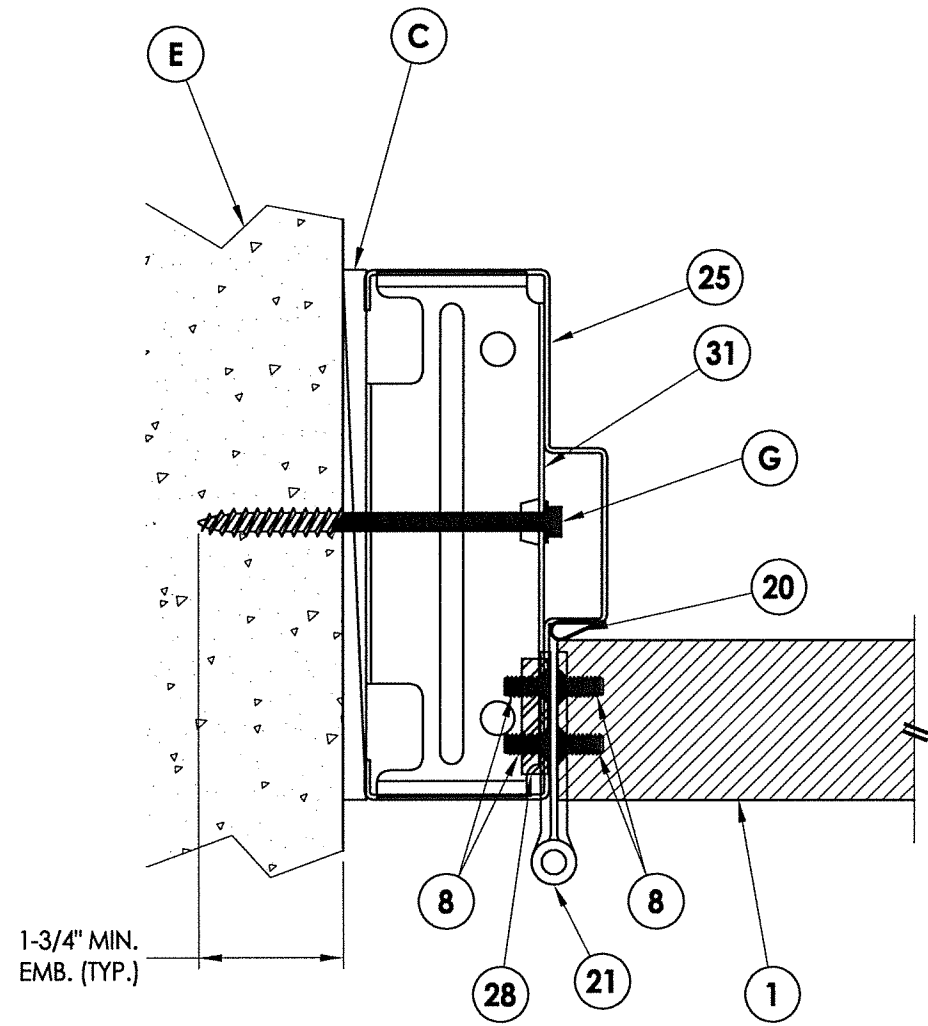
STATE OF FLORIDA
PROFESSIONAL ENGINEER

LFS

November 15, 2022
Documents Prepared By:
Lyndon F. Schmidt
P.E. No. 43409

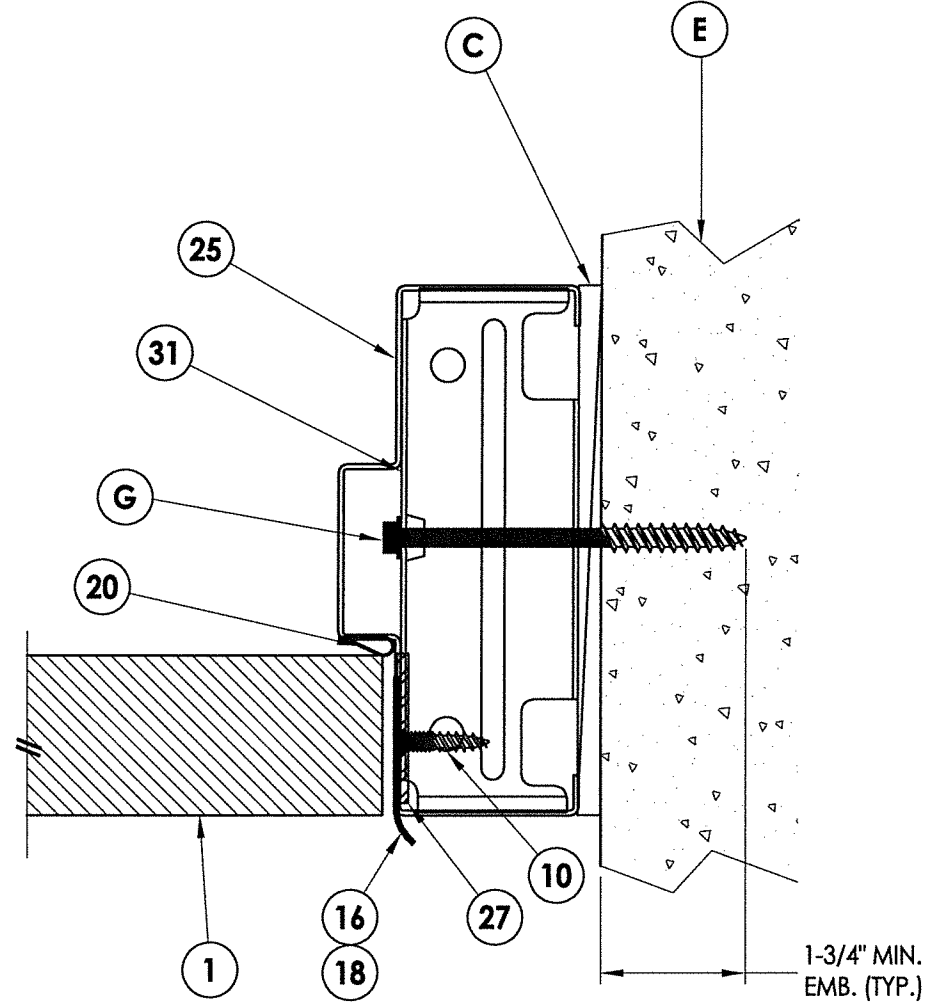
R.W. BUILDING CONSULTANTS, INC.
P.O. Box 230, Valrico, FL 33595
Phone No.: 813.659.9197
FBPE Registry No. 9813

PRODUCT: PREMIER PRODUCTS, INC. "D" STEEL DOOR	
PART OR ASSEMBLY: HORIZONTAL CROSS SECTIONS	
NO.	DATE
BY	
REVISIONS	
DATE: 11/10/22	
SCALE: N.T.S.	
DWG. BY: LFS	
CHK. BY: RW	
DRAWING NO.: FL-41788.16	
SHEET 4 OF 11	



EXTERIOR

INTERIOR



1
6 HORIZONTAL CROSS SECTION

PRODUCT:
PREMIER PRODUCTS, INC.
"D" STEEL DOOR

PART OR ASSEMBLY:
HORIZONTAL CROSS SECTIONS

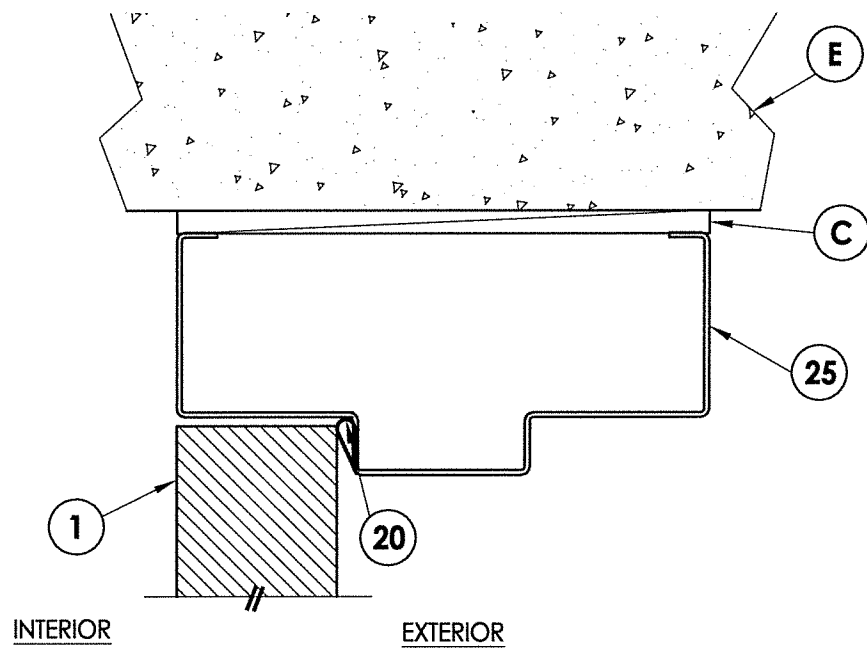
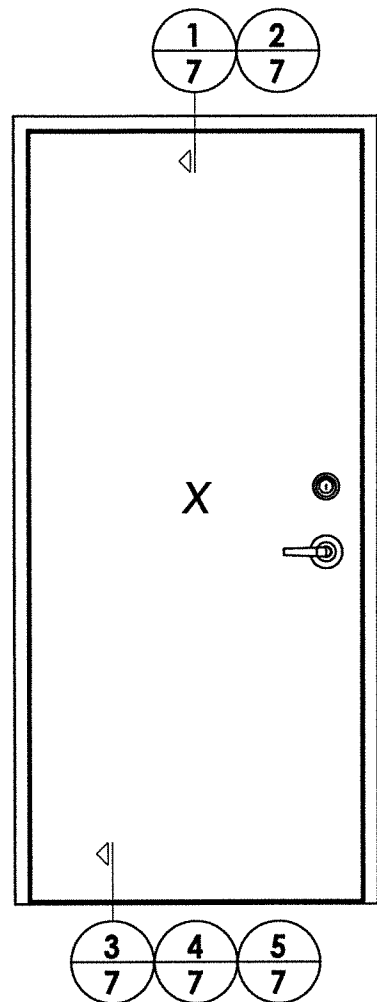
NO.	DATE	BY	REVISIONS

DATE: 11/10/22
SCALE: N.T.S.
DWG. BY: LFS
CHK. BY: RW
DRAWING NO.: FL-41788.16
SHEET 6 OF 11

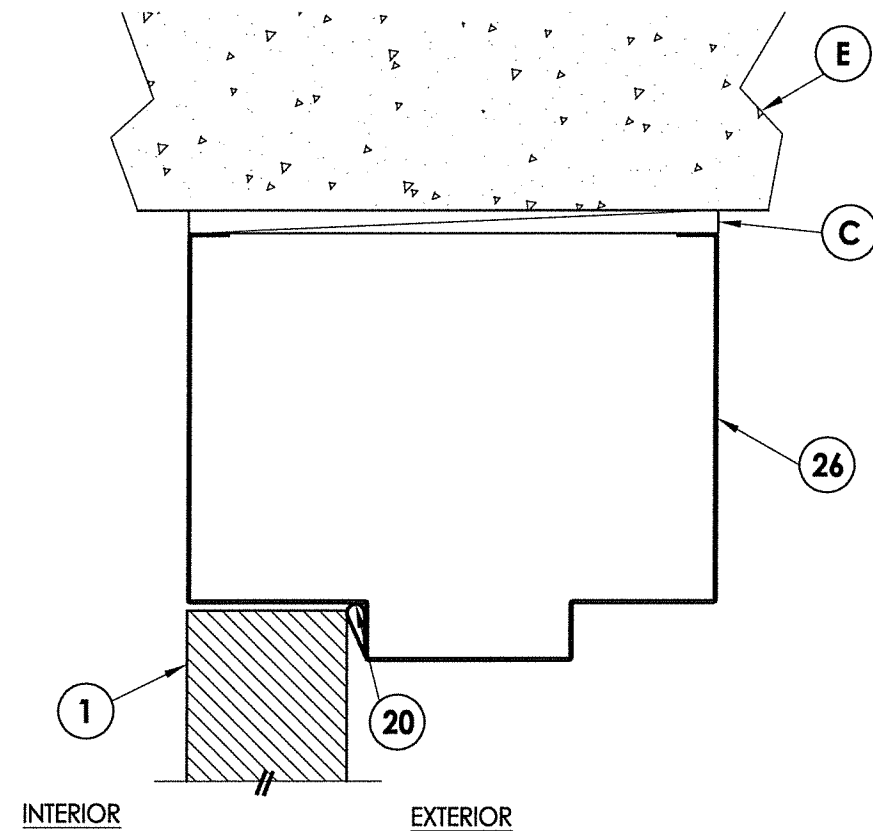
November 15, 2022
Documents Prepared By:
Lyndon F. Schmidt
P.E. No. 43409

Professional Engineer
STATE OF FLORIDA
No. 43409
F. SCHMIDT
LICENSE

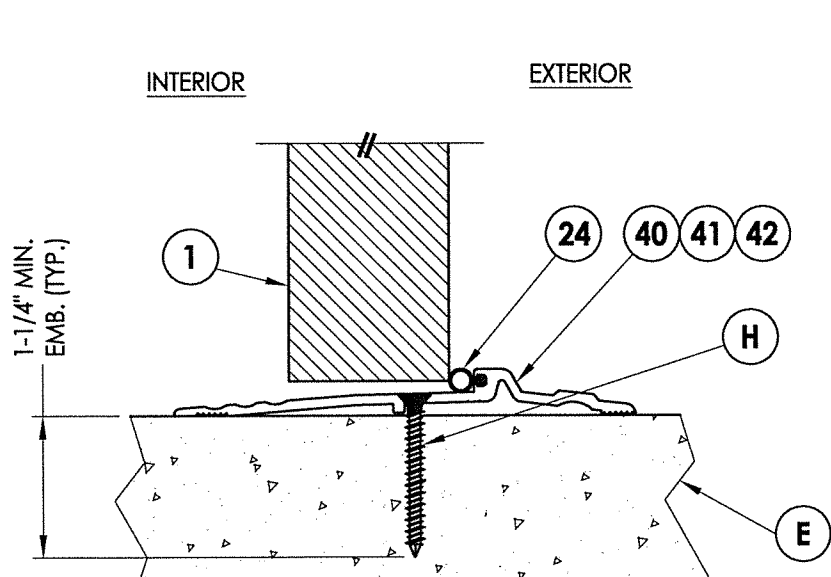
RW
BUILDING CONSULTANTS, INC.
P.O. Box 230, Vairico, FL 33595
Phone No.: 813.659.9197
FBPE Registry No. 9813



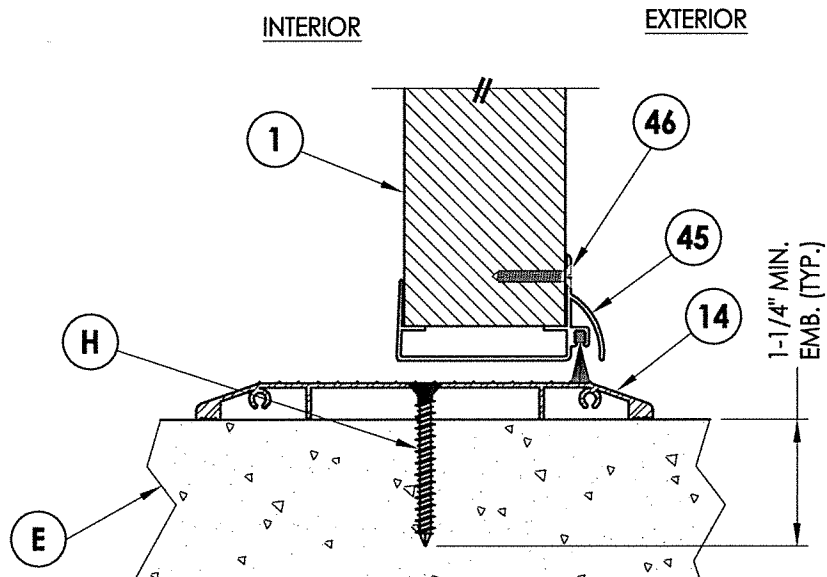
1
7 VERTICAL CROSS SECTION



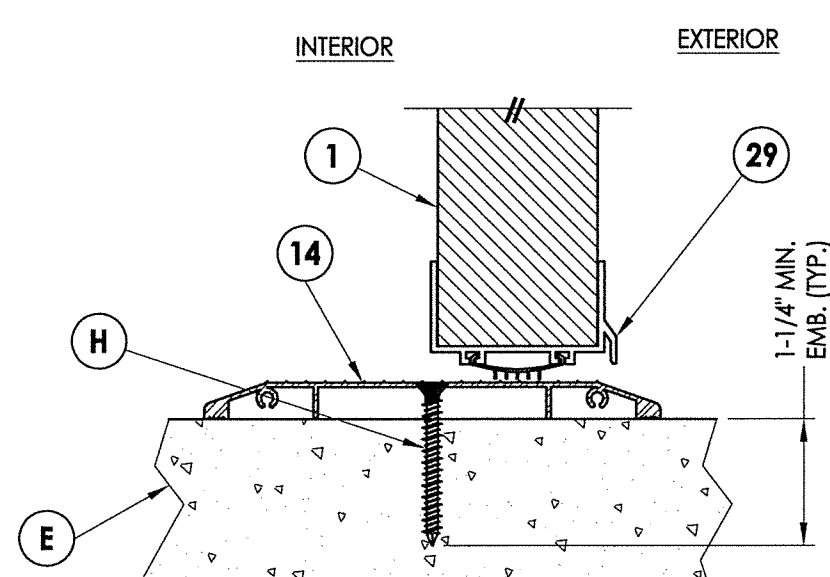
2
7 VERTICAL CROSS SECTION



3
7 VERTICAL CROSS SECTION
Inswing configuration
see general notes, sheet 1
for "HVHZ" water infiltration
requirements



4
7 VERTICAL CROSS SECTION
Inswing configuration
see general notes, sheet 1
for "HVHZ" water infiltration
requirements



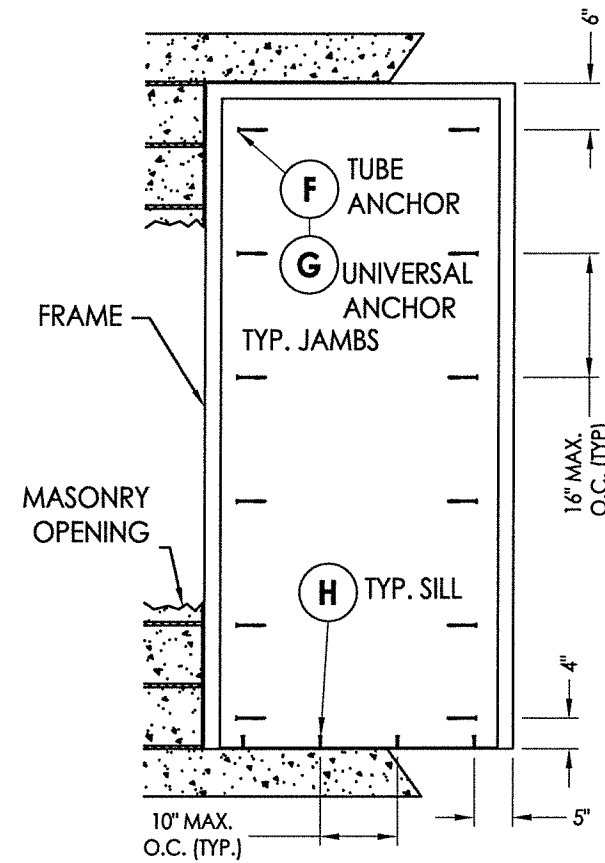
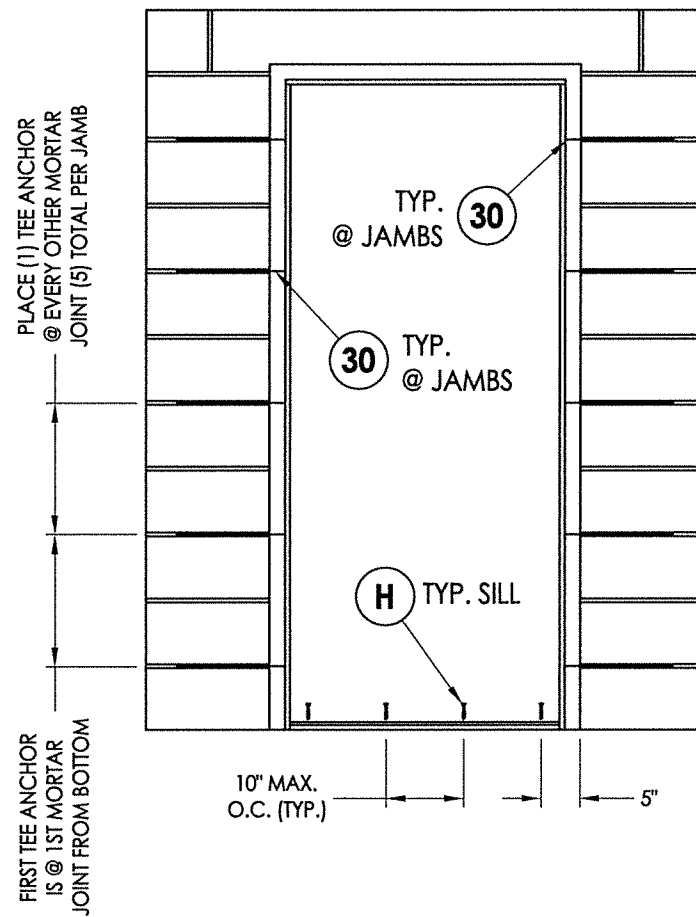
5
7 VERTICAL CROSS SECTION
Inswing configuration
see general notes, sheet 1
for "HVHZ" water infiltration
requirements

November 15, 2022
 Documents Prepared By:
 Lyndon F. Schmidt
 P.E. No. 43409
 RW BUILDING CONSULTANTS, INC.
 P.O. Box 230, Valrico, FL 33595
 Phone No.: 813.659.9197
 FBPE Registry No. 9813

PRODUCT:	PREMIER PRODUCTS, INC.
PART OR ASSEMBLY:	"D" STEEL DOOR
	VERTICAL CROSS SECTIONS

NO.	DATE	BY	REVISIONS

DATE:	11/10/22
SCALE:	N.T.S.
DWG. BY:	LFS
CHK. BY:	RW
DRAWING NO.:	FL-41788.16
SHEET	7 OF 11

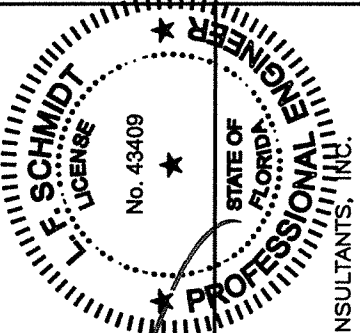


CONCRETE ANCHOR NOTES:

1. Concrete anchor locations at the corners may be adjusted to maintain the min. edge distance to mortar joints.
2. Concrete anchor locations noted as "MAX. ON CENTER" must be adjusted to maintain the min. edge distance to mortar joints, additional concrete anchors may be required to ensure the "MAX. ON CENTER" dimension are not exceeded.
3. Concrete anchor table:

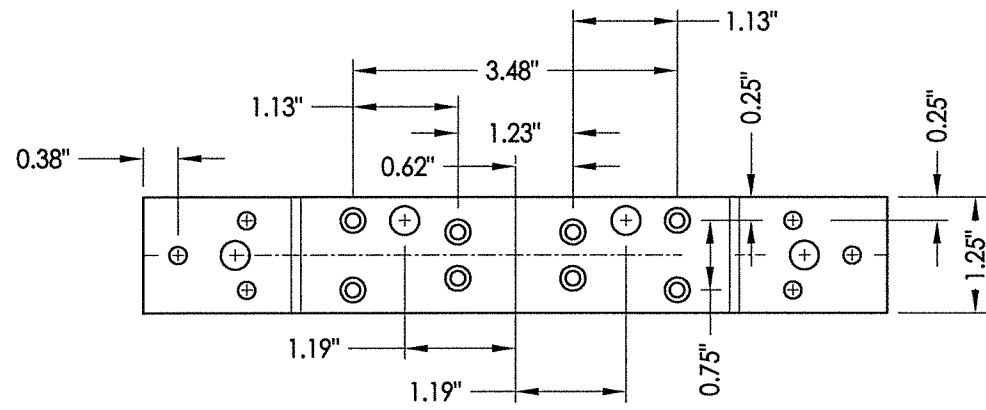
ANCHOR TYPE	ANCHOR SIZE	MIN. EMBEDMENT	MIN. CLEARANCE TO MASONRY EDGE	MIN. CLEARANCE TO ADJACENT ANCHOR
ITW TAPCON®	1/4"	1-1/4"	2-1/2"	4"
DeWALT ULTRACON®	1/4"	1-1/4"	2-1/2"	4"
ITW TAPCON® XL	5/16"	1-3/4"	2-1/2"	5"
DeWALT ULTRACON®	5/16"	1-3/4"	3-1/8"	5"

4. Embedment may be through 1-1/4" face shell of hollow block.

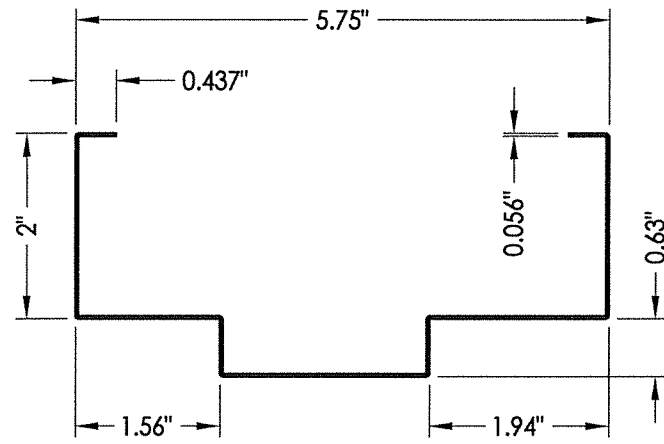
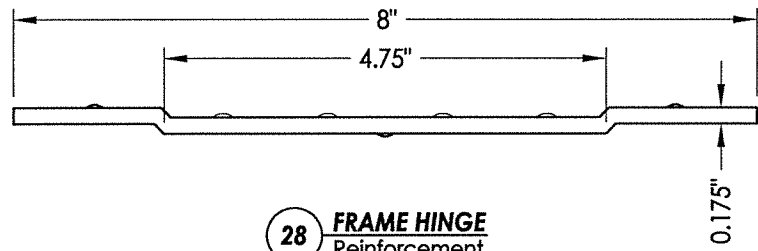

 November 15, 2022
 Documents Prepared By:
 Lyndon F. Schmidt
 P.E. No. 43409

RW BUILDING CONSULTANTS, INC.
 P.O. Box 230, Valrico, FL 33595
 Phone No.: 813.659.9197
 FBPE Registry No. 9813

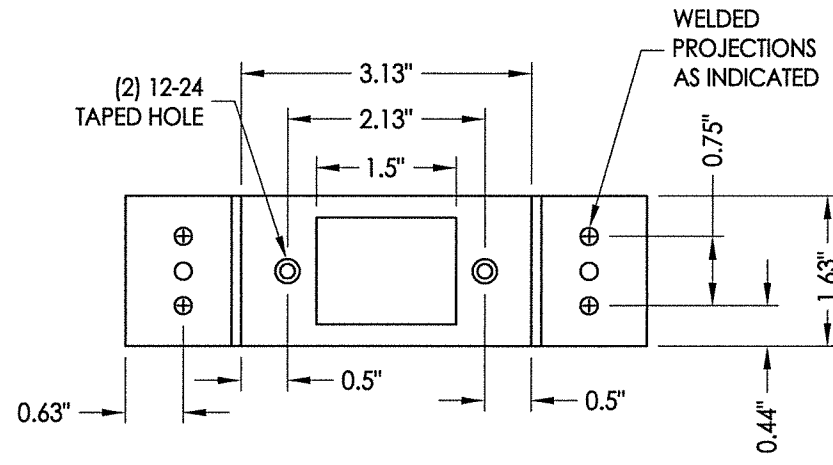
PRODUCT: PREMIER PRODUCTS, INC. "D" STEEL DOOR		PART OR ASSEMBLY: FRAME ANCHORING	
NO.		DATE	
BY		REVISIONS	
DATE: 11/10/22			
SCALE: N.T.S.			
DWG. BY: LFS			
CHK. BY: RW			
DRAWING NO.: FL-41788.16			
SHEET 8 OF 11			



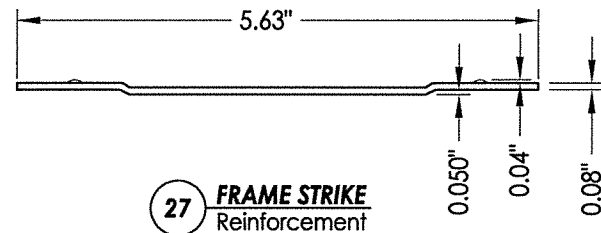
28 FRAME HINGE
Reinforcement



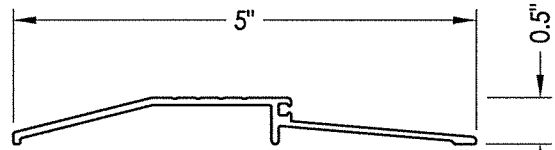
25 FRAME



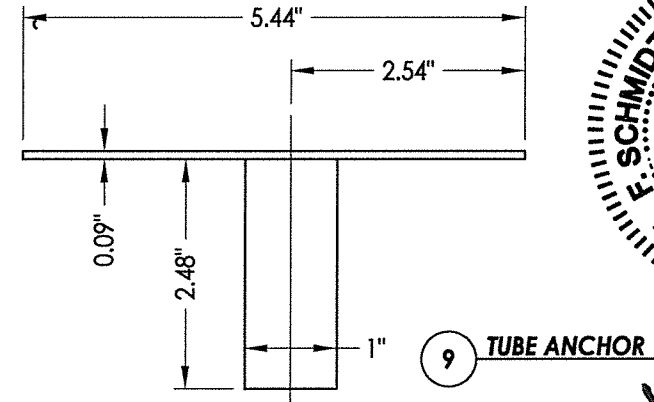
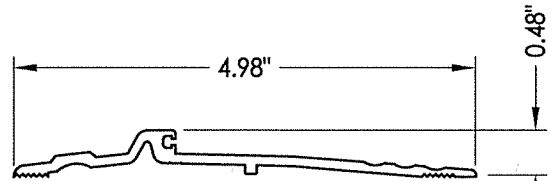
27 FRAME STRIKE
Reinforcement



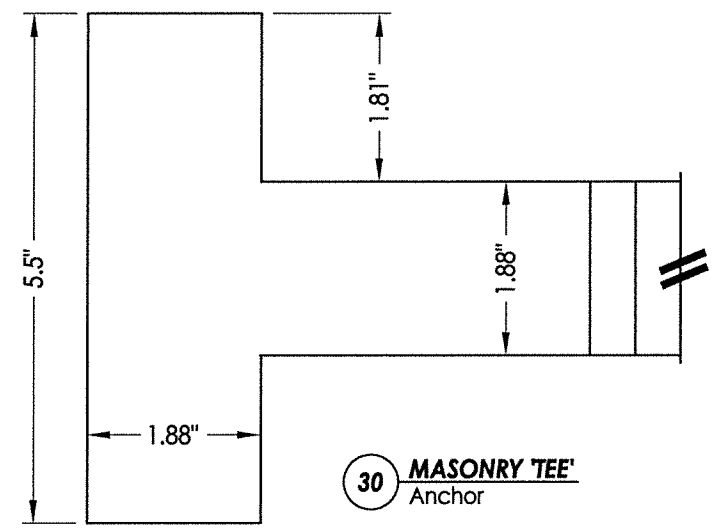
41 THRESHOLD



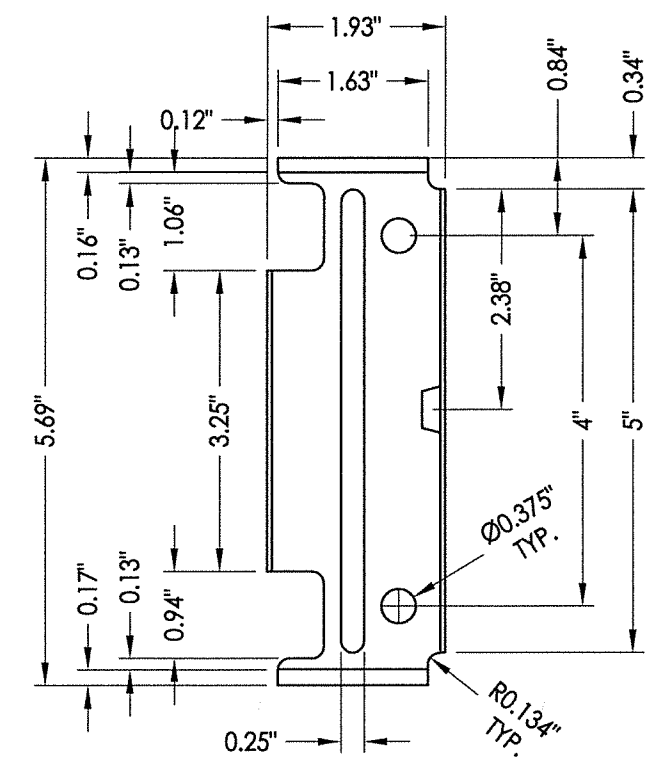
40 THRESHOLD



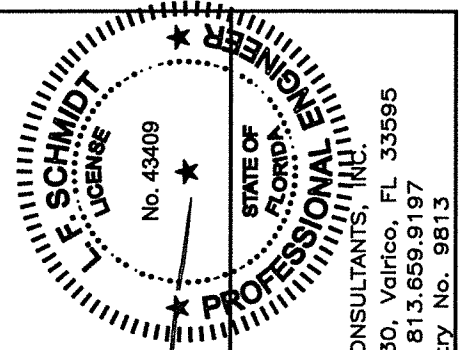
9 TUBE ANCHOR



30 MASONRY TEE
Anchor



31 UNIVERSAL WALL ANCHOR



November 15, 2022

Documents Prepared By:
Lyndon F. Schmidt
P.E. No. 43409

R.W. BUILDING CONSULTANTS, INC.
P.O. Box 230, Vairico, FL 33595
Phone No.: 813.659.9197
FBPE Registry No. 9813

PRODUCT:	PREMIER PRODUCTS, INC. "D" STEEL DOOR
PART OR ASSEMBLY:	COMPONENTS

NO.	DATE	BY	REVISIONS

DATE:	11/10/22
SCALE:	N.T.S.
DWG. BY:	LFS
CHK. BY:	RW
DRAWING NO.:	FL-41788.16
SHEET	10 OF 11

